

Vessel: Multi-Purpose Work Boat / Meercat MC16**Name: MURJAN AL SHARQ 30****GENERAL**

| | |
|-----------------|---|
| Type of Vessel | :Multi-Purpose Work Boat Barge |
| Basic Functions | :Dredging, Towing, Pushing, Survey, Crane Loads, Silt Screen Installation |
| Builder | :MEERCAT Workboats Ltd. |
| Place | :UK |
| Build Date | :2013 |
| Delivery Date | :2013 |
| Classification | :Bureau Veritas I * Hull • MACH Special Service/Workboat Coastal Area |
| Hull Material | :Steel |

BOAT REGISTRY

| | |
|------------------------|---------------------|
| Ship's Name | :Murjan Al Sharq 30 |
| BV Registration Number | :25989B |
| Official Number | :3730 |
| Flag | :Saudi Arabia |
| Call Sign | :HZG060 |

DIMENSIONS AND WEIGHT

| | |
|------------------|------------|
| Gross Tonnage 69 | :54.6 tons |
| Net Tonnage 69 | :40 tons |
| Deadweight | :60 tons |
| Overall Length | :18 m |
| LPP | :17.5 m |
| Breadth | :8 m |
| Depth | :1.75 m |
| Draught | :1 m |

PROPULSION SYSTEM

| | |
|--------------|----------------------------------|
| Main Engines | :2x Doosan L086TIH |
| Total Power | :420 bkw (2x 285 hp) at 2100 rpm |
| Gear Boxes | :Dong-I KGDMT110A.2 |
| Propellers | :Bronze Solid Screw Propellers |
| Ratio | :2.09:1 |

PERFORMANCE

| | |
|--------------------|------------|
| Bollard Pull Ahead | :4.1 tons |
| Cruise Speed | :7.5 knots |
| Maximum Speed | :8.5 knots |

TANK CAPACITY

| | |
|-------------------------|-------------------------|
| Fuel Oil | :6740 L (2x 3370 L) |
| Cargo Fuel Oil Capacity | :20,450 L (2x 10,225 L) |
| Fresh Water | :910 L |
| Lubrication Oil | :27,300 L (2x 13,650 L) |

DECK LAYOUT

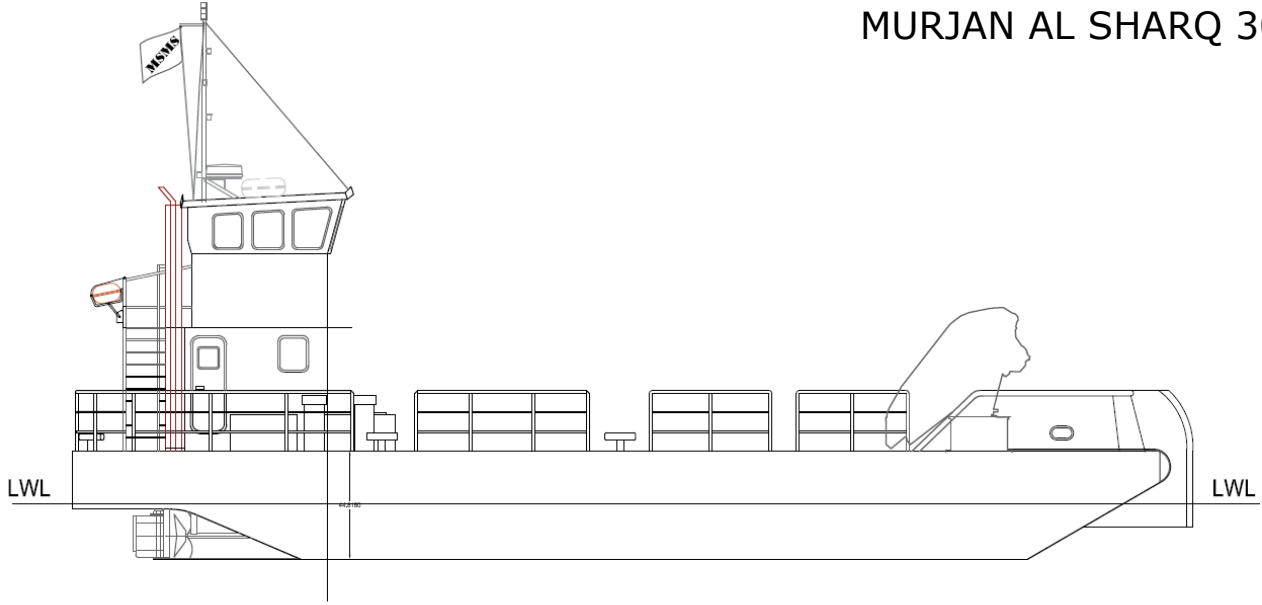
| | |
|-----------------------|------------------------------|
| Anchor Windlass | :Lofrans 1.5 kW 12 mm Gypsy |
| Winch | :Dynamic Oil S60 7 tons |
| Crane & Winch Control | :Scanreco Remote Control |
| Hull Plating | :8 mm |
| Sheer Strake | :500 mm x 12 mm |
| Framing | :75 mm x 50 mm x 8mm RSA |
| Deep Frames | :125 mm x 75 mm x 8 mm RSA |
| Push Knees | :2x Twin 150 x 150 mm Rubber |
| Deck Sheathing | :42 mm Softwood |
| Starboard Hull | :18 m x 4.12 m x 4.1 m |
| Starboard Hull Weight | :28 tons |
| Port Hull | :18 m x 4.12 m x 4.1 m |
| Port Hull Weight | :33 tons |
| Spuds | :18 m |

NAUTICAL AND COMMUNICATION EQUIPMENT

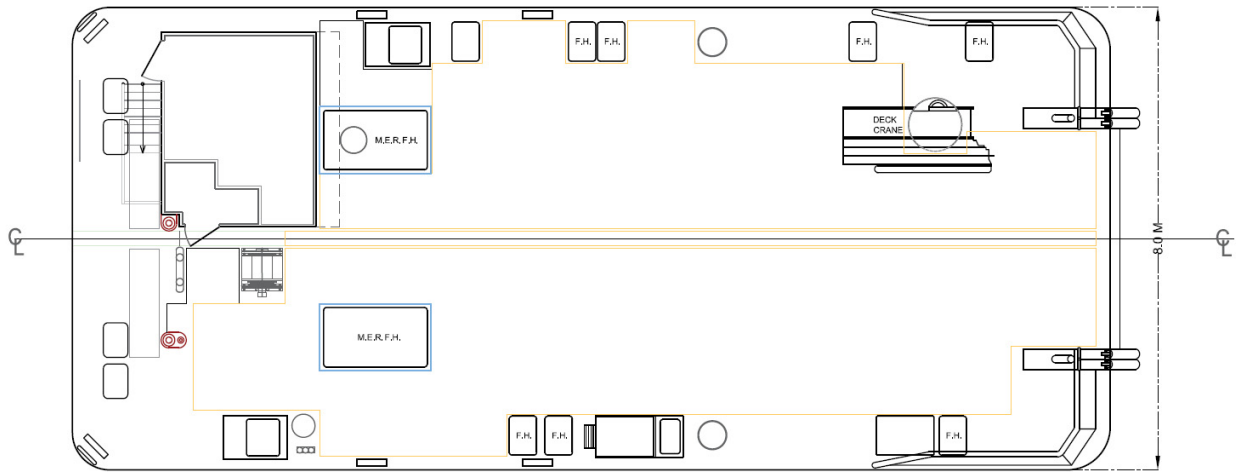
| | |
|--------------|--------------------------------|
| Radar | :Raymarine Radar Chart Plotter |
| Radio | :ICOM VHF |
| Echo Sounder | :1x |
| GPS | :1x |



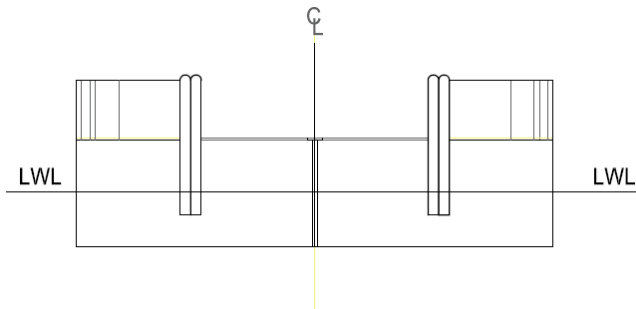
MURJAN AL SHARQ 30



PROFILE



PLAN



AUXILIARY SYSTEMS

| | |
|----------------|--------------------------|
| Generator Set | :1x Beta Marine 21 kVA |
| Engine Cooling | :Blokland Bottom Coolers |
| Steering | :Sleipner Hand Hydraulic |